



Raintree Shopping Center Pad Sites

Pad Sites For Sale, Ground Lease, or Build-to Suit

291 Highway & 150 Highway (SWC), Lee's Summit, MO



LEASE RATE: \$80,000/YEAR | SALE PRICE: \$16/SF

DEMOGRAPHICS

	1 mile	3 miles	5 miles
Estimated Population	5,721	26,069	68,908
Avg. Household Income	\$164,662	\$148,860	\$131,728

- Pad Sites for sale or ground lease - two pads 1.43 acres and 1.42 acres
- Adjacent tenants include Sherwin Williams, Papa Murphy's, Serc Physical Therapy, The Lodge, McDonald's, Master Wok, Summit Lakes Dental Care, and Starbucks Coffee
- Signalized intersection east of 80,000 sq ft Price Chopper
- High residential growth
- In South Lee's Summit, a suburb of Greater Kansas City, named among "Best Places to Raise Kids" by Business Week

[CLICK HERE TO VIEW MORE LISTING INFORMATION](#)

For More Information Contact:

CARSON ST. CLAIR | 816.412.7306 | cstclair@blockandco.com
 BOB JAEKEL | 816.412.7365 | bjaelkel@blockandco.com
 GARRETT COHOON | 816.412.7315 | gcohoon@blockandco.com

Exclusive Agents





Raintree Shopping Center Pad Sites

Pad Sites For Sale, Ground Lease, or Build-to Suit
291 Highway & 150 Highway (SWC), Lee's Summit, MO

DRONE PHOTO



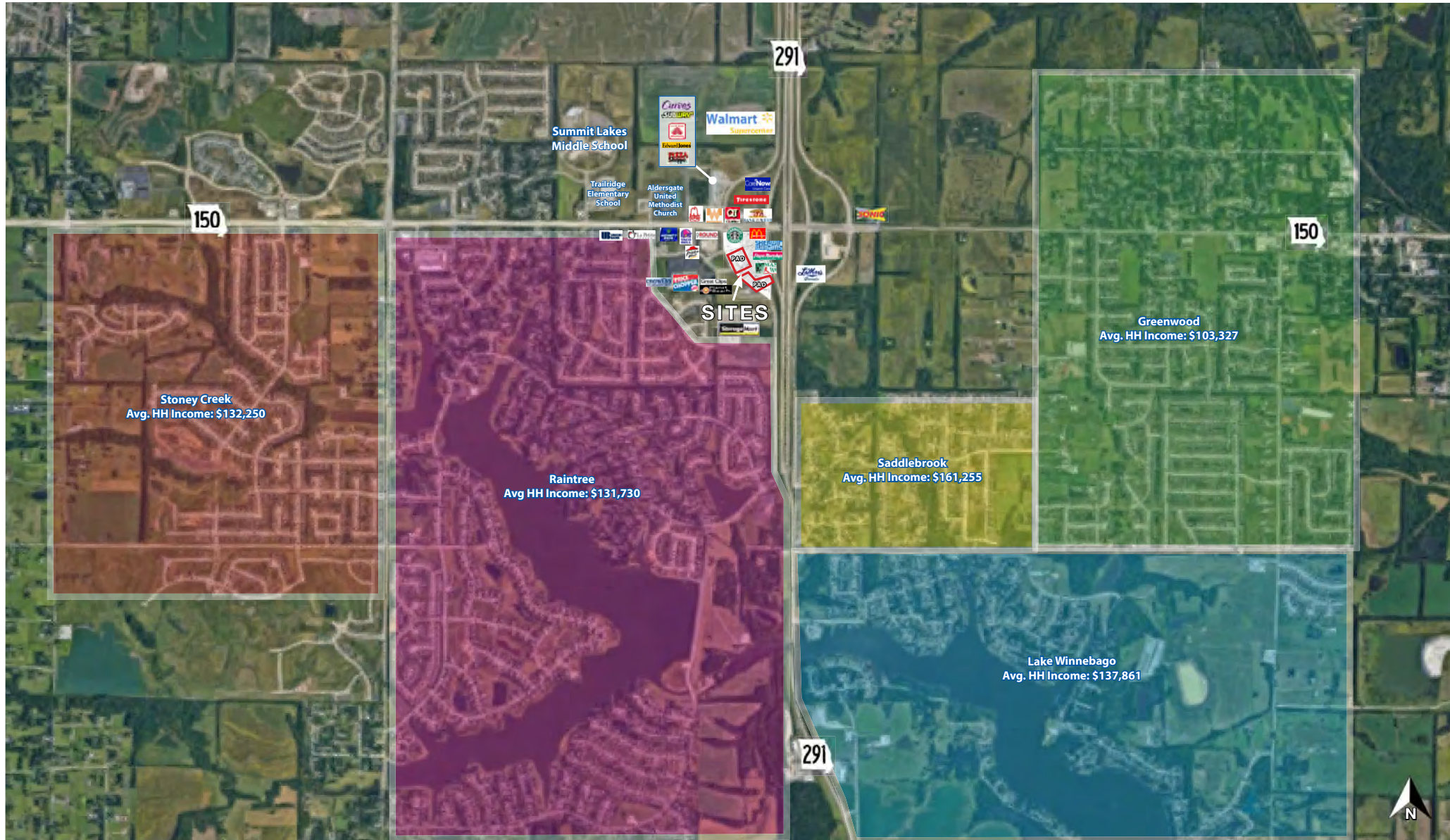


Raintree Shopping Center Pad Sites

Pad Sites For Sale, Ground Lease, or Build-to Suit

291 Highway & 150 Highway (SWC), Lee's Summit, MO

AERIAL



Raintree Shopping Center Pad Sites

Pad Sites For Sale, Ground Lease, or Build-to Suit

291 Highway & 150 Highway (SWC), Lee's Summit, MO

SITE PLAN

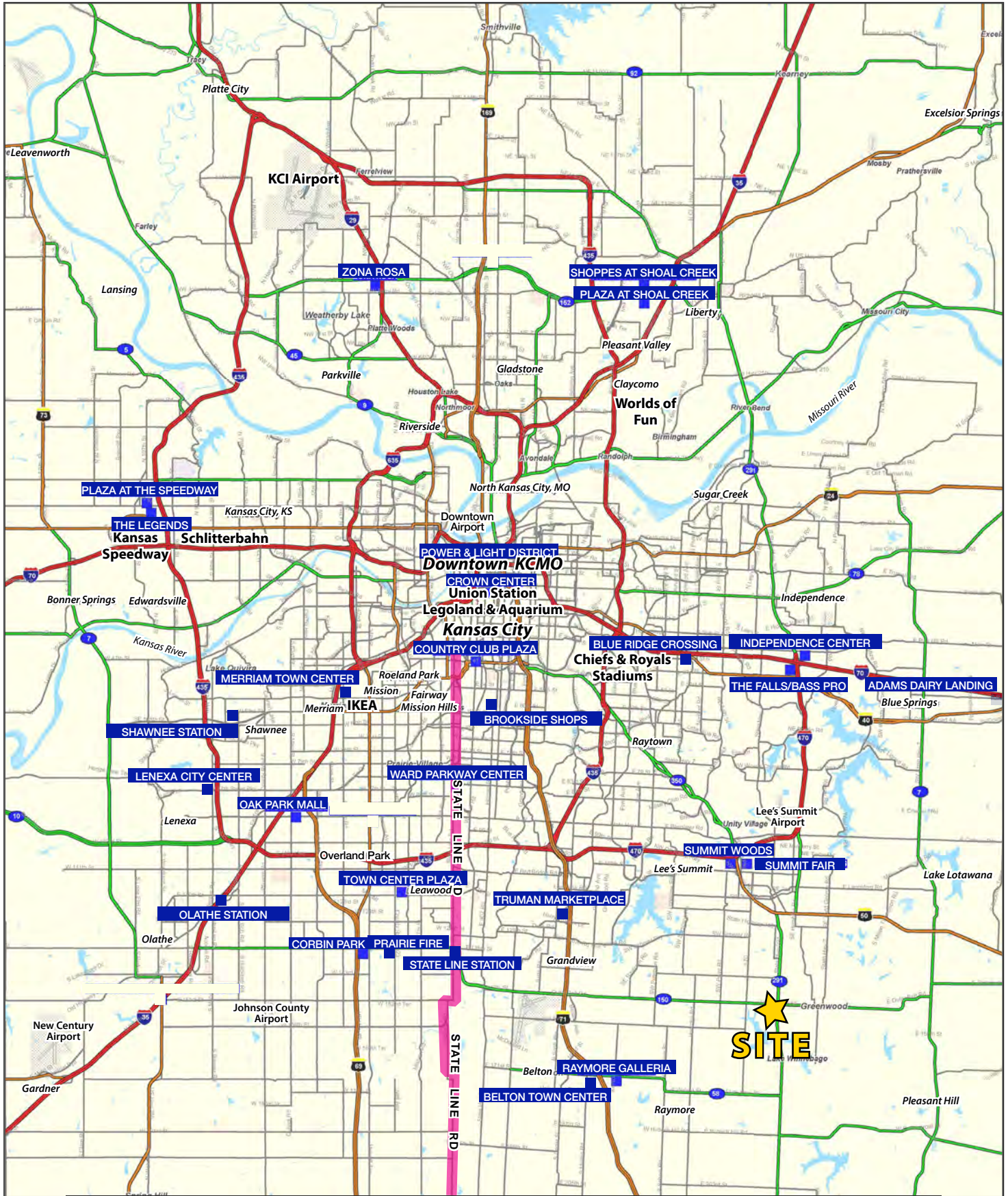




Raintree Shopping Center Pad Sites

Pad Sites For Sale, Ground Lease, or Build-to Suit

291 Highway & 150 Highway (SWC), Lee's Summit, MO

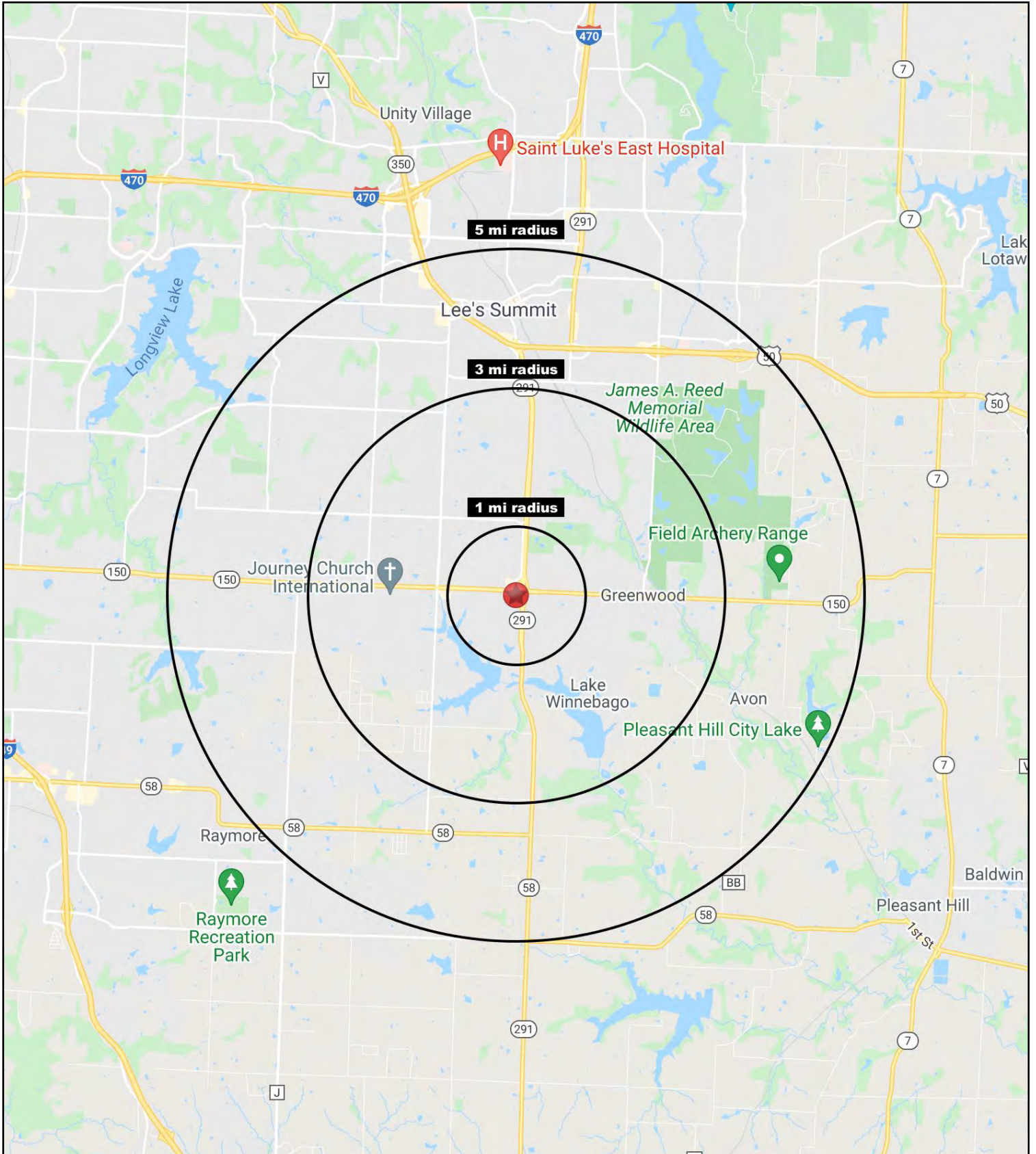




Raintree Shopping Center Pad Sites

Pad Sites For Sale, Ground Lease, or Build-to Suit

291 Highway & 150 Highway (SWC), Lee's Summit, MO





Raintree Shopping Center Pad Sites

Pad Sites For Sale, Ground Lease, or Build-to Suit

291 Highway & 150 Highway (SWC), Lee's Summit, MO

291 Highway & 150 Highway Lee's Summit, MO	1 mi radius	3 mi radius	5 mi radius
Population			
2023 Estimated Population	5,721	26,039	68,908
2028 Projected Population	6,404	30,043	74,756
2020 Census Population	5,049	24,242	68,034
2010 Census Population	4,839	20,656	62,179
Projected Annual Growth 2023 to 2028	2.4%	3.1%	1.7%
Historical Annual Growth 2010 to 2023	1.4%	2.0%	0.8%
2023 Median Age	38.2	38.7	38.6
Households			
2023 Estimated Households	2,034	9,792	27,177
2028 Projected Households	2,226	11,120	28,953
2020 Census Households	1,790	8,724	25,693
2010 Census Households	1,691	7,340	23,393
Projected Annual Growth 2023 to 2028	1.9%	2.7%	1.3%
Historical Annual Growth 2010 to 2023	1.6%	2.6%	1.2%
Race and Ethnicity			
2023 Estimated White	80.0%	82.6%	81.9%
2023 Estimated Black or African American	11.1%	9.7%	9.6%
2023 Estimated Asian or Pacific Islander	2.6%	2.0%	1.8%
2023 Estimated American Indian or Native Alaskan	0.2%	0.2%	0.2%
2023 Estimated Other Races	6.0%	5.6%	6.4%
2023 Estimated Hispanic	5.5%	4.7%	5.4%
Income			
2023 Estimated Average Household Income	\$164,662	\$148,860	\$131,728
2023 Estimated Median Household Income	\$133,106	\$126,413	\$106,711
2023 Estimated Per Capita Income	\$58,582	\$55,993	\$51,974
Education (Age 25+)			
2023 Estimated Elementary (Grade Level 0 to 8)	1.3%	0.9%	1.3%
2023 Estimated Some High School (Grade Level 9 to 11)	1.6%	1.8%	2.3%
2023 Estimated High School Graduate	19.1%	20.3%	20.8%
2023 Estimated Some College	17.6%	19.9%	21.5%
2023 Estimated Associates Degree Only	8.0%	8.7%	9.8%
2023 Estimated Bachelors Degree Only	32.4%	30.7%	27.5%
2023 Estimated Graduate Degree	20.0%	17.7%	16.8%
Business			
2023 Estimated Total Businesses	243	705	2,419
2023 Estimated Total Employees	1,412	5,222	18,802
2023 Estimated Employee Population per Business	5.8	7.4	7.8
2023 Estimated Residential Population per Business	23.5	36.9	28.5

